



BBPS Yard Duty and Supervision Policy



Help for non-English speakers

If you need help to understand the information in this policy please contact the school.

PURPOSE

To ensure school staff understand their supervision and yard duty responsibilities.

SCOPE

This policy applies to all teaching and non-teaching staff at Brighton Beach Primary School (BBPS), including education support staff, casual relief teachers and visiting teachers.

POLICY

Appropriate supervision is an important strategy to monitor student behaviour and enables staff to identify and respond to possible risks at school as they arise. It also plays a vital role in helping schools to discharge their duty of care to students.

The Principal is responsible for ensuring that there is a well organised and responsive system of supervision and yard duty in place during school hours, before and after school, and on school excursions and camps and other school activities.

School staff are responsible for following reasonable and lawful instructions from the Principal, including instructions to provide supervision to students at specific dates, times and places. Supervision should be undertaken in a way that identifies and mitigates risks to child safety.

Before and after school

BBPS grounds are supervised by school staff from 8.45 am until 3.45 pm. Outside of these hours, school staff will not be available to supervise students.

Before and after school, school staff will supervise the Windermere oval and Exon Playground.

Parents and carers will be advised through our school website and regular reminders in our newsletter that they should not allow their children to attend BBPS outside of these hours. Families will be encouraged to contact TheirCare on 1300 072 410 or refer to www.theircare.com.au for more information about the before and after school care facilities available to our school community.

If a student arrives at school before supervision commences at the beginning of the day, the Principal or nominee staff member will, as soon as practicable, follow up with the parent/carer to:

- advise of the supervision arrangements before school
- request that the parent/carer make alternate arrangements.

If a student is not collected before supervision finishes at the end of the day, the Principal or nominee staff member will consider whether it is appropriate to:

- attempt to contact the parents/carers
- attempt to contact the emergency contacts
- place the student in an out of school hours care program (if available and the parent consents)
- contact Victoria Police and/or Child Protection to arrange for the supervision, care and protection of the student.

Yard duty

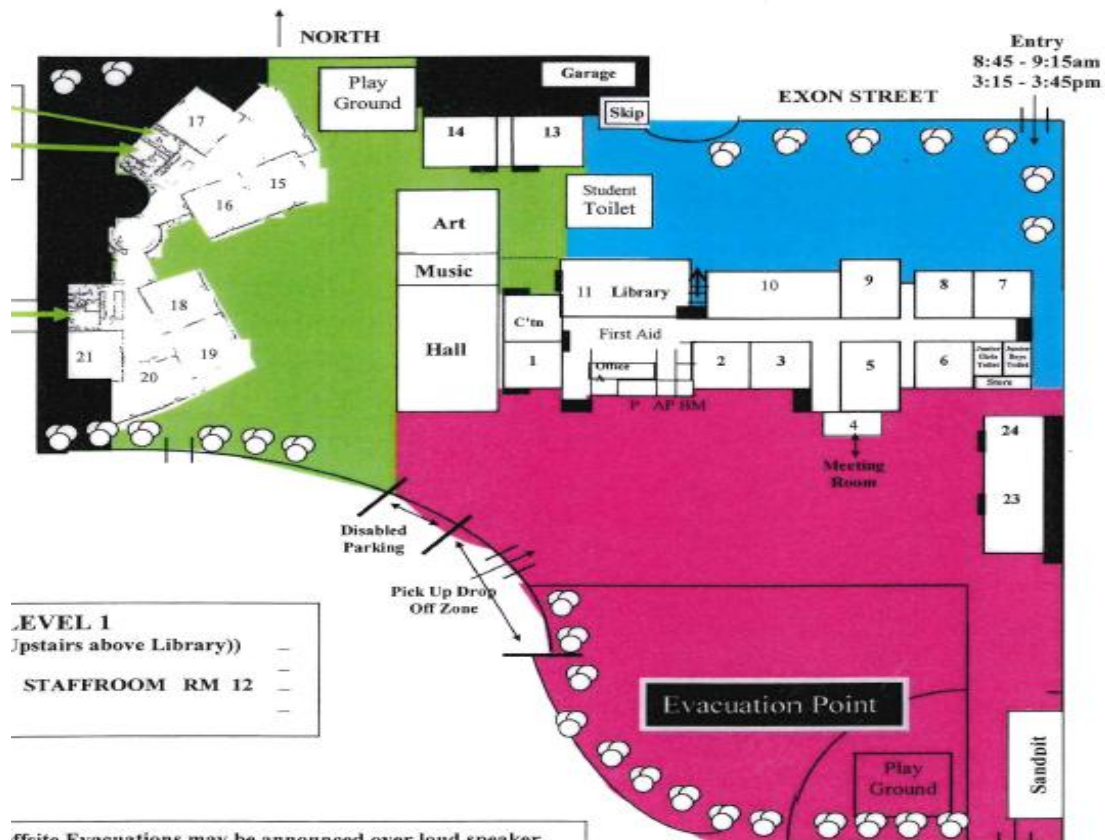
All staff at BBPS are expected to assist with yard duty supervision and will be included in the weekly roster.

The Principal or Assistant Principal is responsible for preparing and communicating the yard duty roster on a regular basis. At BBPS staff will be designated a specific yard duty area to supervise.

Yard duty zones

The designated yard duty areas for our school are Windermere Oval, West Playground and Exon Playground.

Zone	Area
Zone 1	Windermere Oval and Playground (pink)
Zone 2	West Playground (green)
Zone 3	Exon Playground (blue)



Yard duty equipment

School staff must:

- wear a provided safety/hi-vis vest whilst on yard duty. Safety/hi-vis vests will be stored opposite the staff pigeon holes.
- carry the yard duty first aid bag at all times during supervision. The yard duty first aid bag will be stored opposite the staff pigeon holes.
- be familiar with the yard duty information pack containing student health and safety information attached on the yard duty first aid bag.
- carry a mobile phone at all times, in case of an emergency.

Yard duty equipment must be returned after the period of supervision or handed to the relieving staff member.

Yard duty responsibilities

Staff who are rostered for yard duty must remain in the designated area until they are replaced by a relieving staff member.

During yard duty, supervising school staff must engage in:

- methodically move around the designated zone ensuring active supervision of all students
- where safe to do so, approach any unknown visitor who is observed on school grounds without a clear legitimate purpose, and ensure they have a visitor pass and have signed in at the office.
- ensure students remain in their designated year level zones
- be alert and vigilant
- intervene immediately if potentially dangerous or inappropriate behaviour is observed in the yard
- enforce behavioural standards, school values and implement appropriate consequences for breaches of safety rules, in accordance with any relevant disciplinary measures set out in the school's Student Wellbeing Support Plan.
- ensure that students who require first aid assistance receive it as soon as practicable
- log any incidents or near misses as appropriate on Compass Chronicle and inform the classroom teacher of the process followed.

If being relieved of their yard duty shift by another staff member (for example, where the shift is 'split' into 2 consecutive time periods), the staff member must ensure that a brief but adequate verbal 'handover' is given to the relieving staff member in relation to any issues which may have arisen during the first shift.

If the supervising staff member is unable to conduct yard duty at the designated time, they should arrange an internal swap with another staff member ahead of time, and let the Assistant Principal know so that the daily organisation is up to date.

If the supervising staff member needs to leave yard duty during the allocated time, they should seek support from another staff member but should not leave the designated area until the relieving staff member has arrived in the designated area.

If the relieving staff member does not arrive for yard duty, the staff member currently on duty should contact the Administration Office and should not leave the designated area until a relieving staff member has arrived. The Administration Office should contact the rostered-on staff member, and if they are uncontactable, notify the Assistant Principal.

Students will be encouraged to speak to the supervising yard duty staff member if they require assistance during recess or lunchtime.

Classroom

The classroom teacher is responsible for the supervision of all students in their care during class.

If a teacher needs to leave the classroom unattended at any time during a lesson, they should first contact their teaching partner for assistance. The teacher should then wait until a replacement staff member has arrived at the classroom before leaving.

School activities, camps and excursions

The Principal and leadership team are responsible for ensuring that students are appropriately supervised during all school activities, camps and excursions, including when external providers are engaged to conduct part or all of the activity. Appropriate supervision will be planned for school activities, camps and excursions on an individual basis, depending on the activities to be undertaken and the level of potential risk involved, and will follow the supervision requirements in the Department of Education Camps and Excursions Policy.

Digital devices and virtual classroom

BBPS follows the Department's [Cybersafety and Responsible Use of Technologies Policy](#) with respect to supervision of students using digital devices. See also the BBPS Digital Learning Policy.

BBPS will also ensure appropriate supervision of students participating in remote and flexible learning environments while on school site. In these cases, students will be supervised by onsite teaching staff in a common area.

Students requiring additional supervision support

Sometimes students will require additional supervision, such as students with disability or other additional needs. In these cases, the Principal or delegate will ensure arrangements are made to roster additional staff as required. This may include on yard duty, in the classroom or during school activities.

Supervision of student in emergency operating environments

In emergency circumstances our school will follow our Emergency Management Plan, including with respect to supervision.

COMMUNICATION

This policy will be communicated to our school community in the following ways:

- Included in staff induction processes
- Discussed at staff briefings or meetings, as required

Information for parents and students on supervision before and after school is available on our school website and parent reminders are sent in our school newsletter.

FURTHER INFORMATION AND RESOURCES

The Department's Policy and Advisory Library (PAL):

- [Child Safe Standards](#)
- [Cybersafety and Responsible Use of Technologies](#)
- [Duty of Care](#)
- [Excursions](#)
- [Supervision of Students](#)
- [Visitors in Schools](#)

POLICY REVIEW AND APPROVAL

Policy last reviewed	2025
Consultation	School Council Education Sub-Committee
Approved by	Principal
Next scheduled review date	September, 2027

This policy will also be updated if significant changes are made to school grounds that require a revision of BBPS yard duty and supervision arrangements.